

## 国際交流宿舎(上野芝)見取り図

在留資格が「留学」のもので大阪公立大学に在籍する者が入居申請可能な留学生寮です。

単身：29室

家族部屋：3室

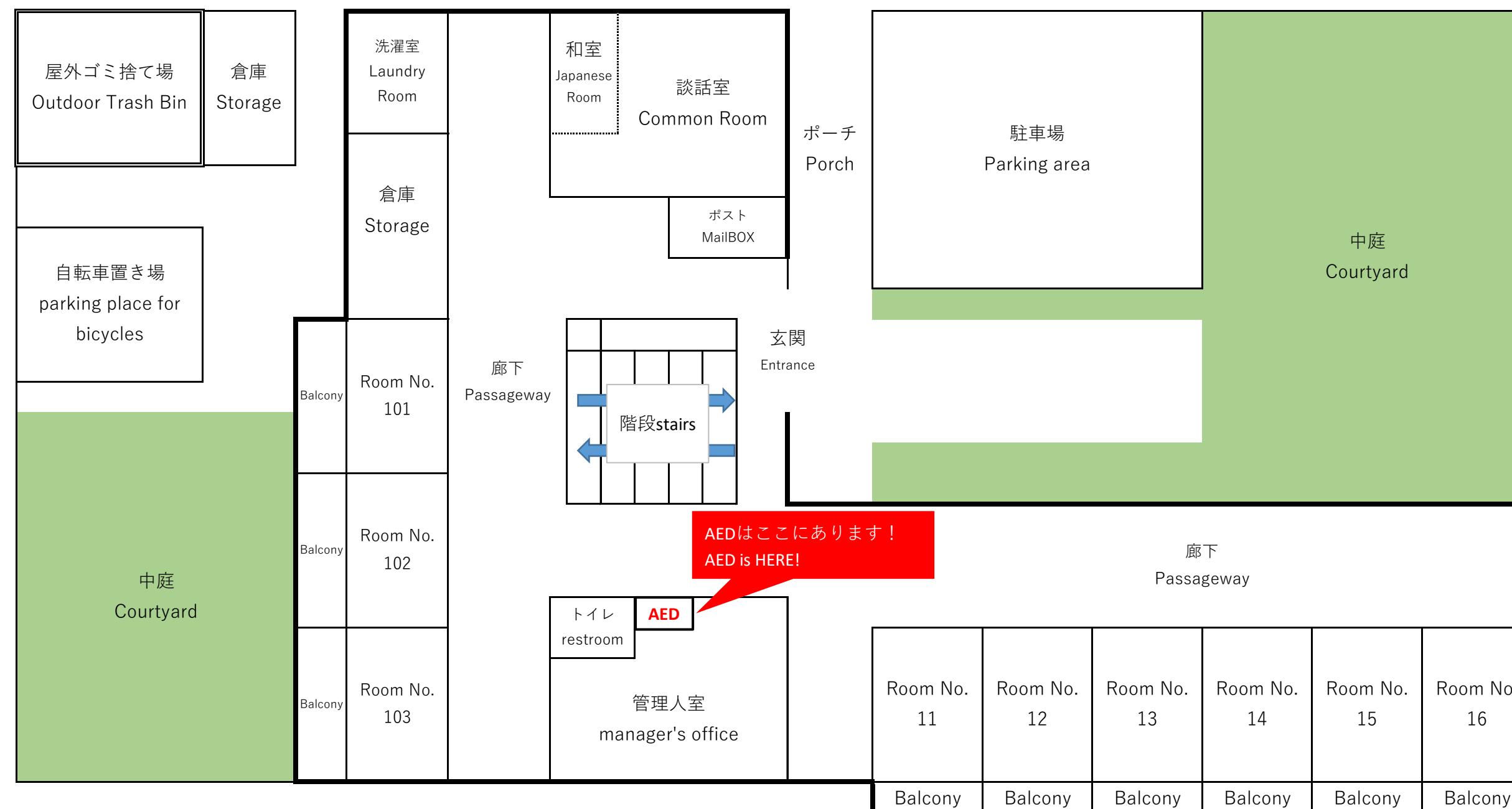
Floor plan of International Residence (Uenoshiba)

This is a dormitory for international students whose status of residence is "Student" and who are enrolled at Osaka Metropolitan University can apply to move in.

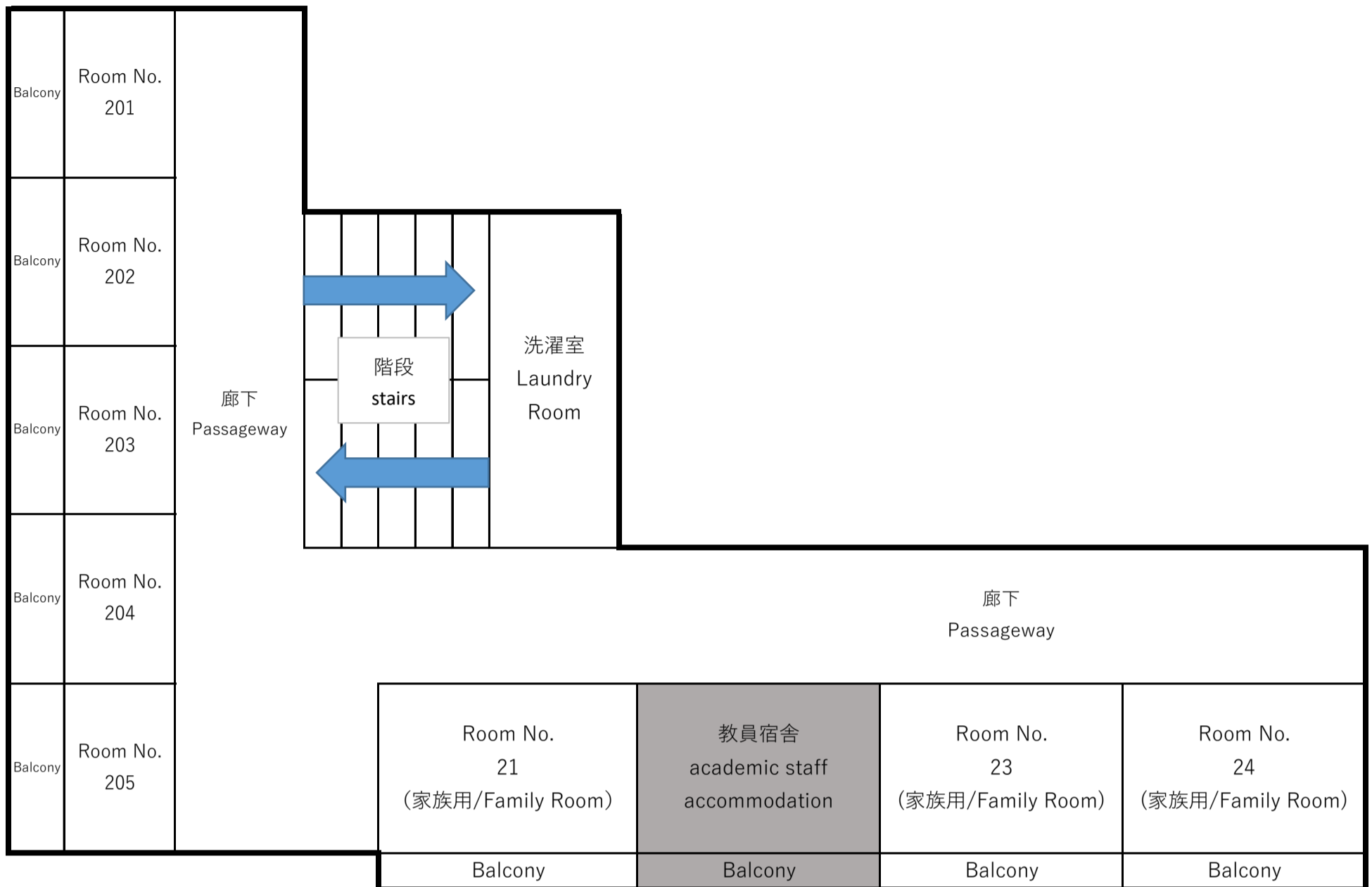
Single room: 29 rooms

Family room: 3 rooms

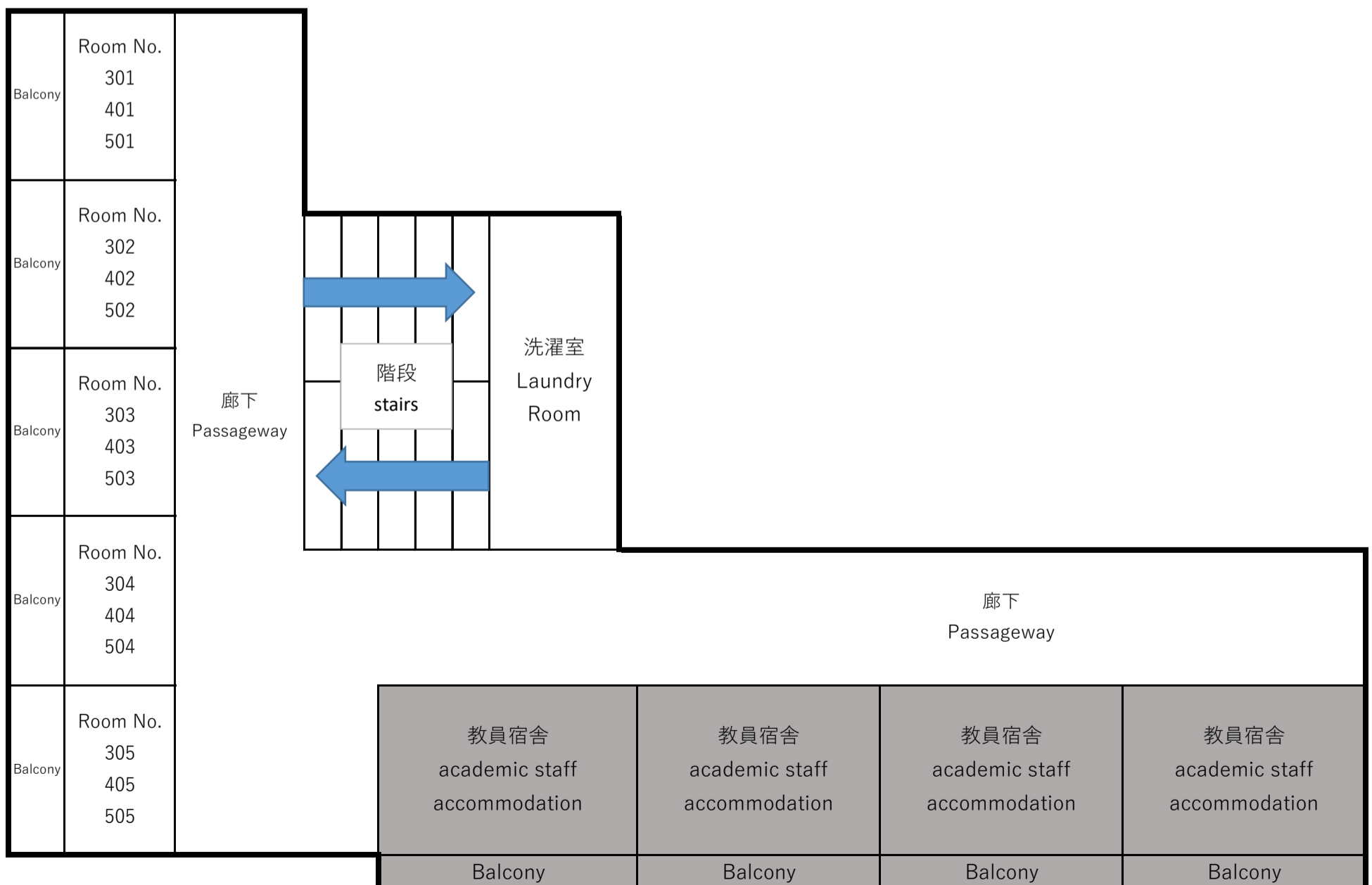
### 1階/1st Floor



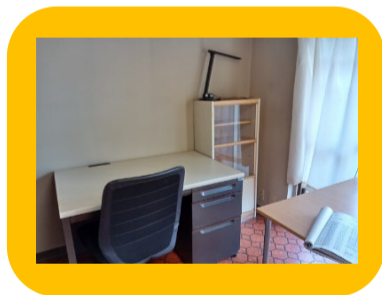
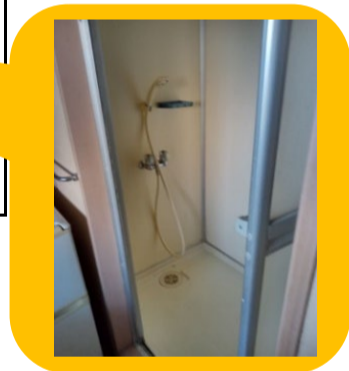
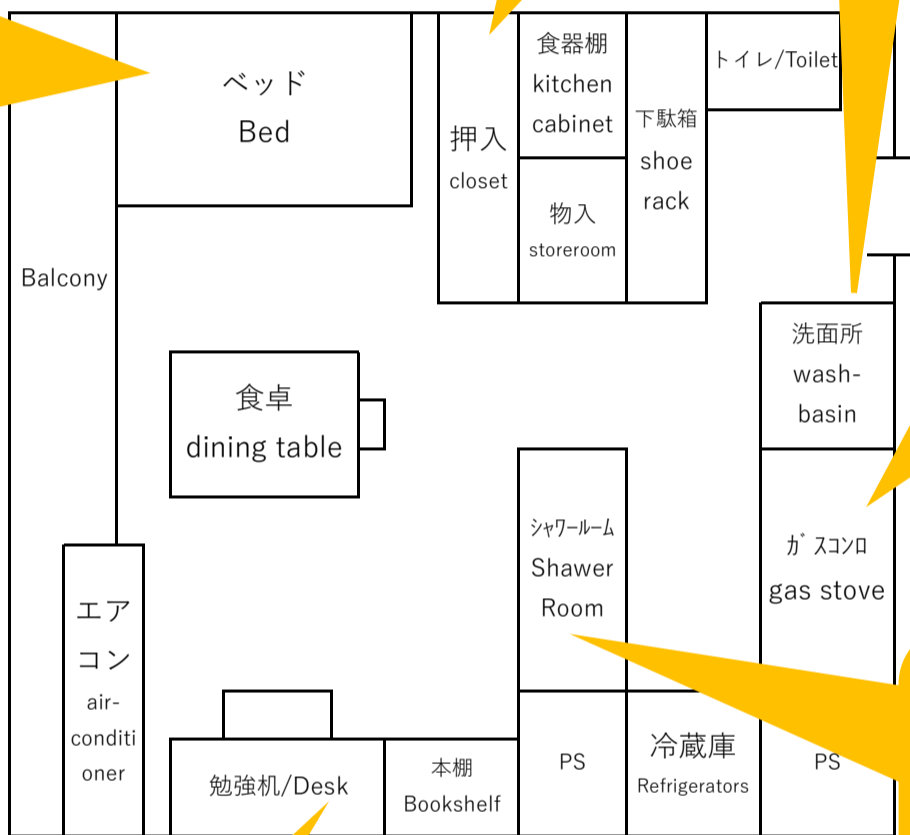
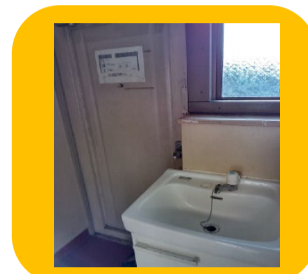
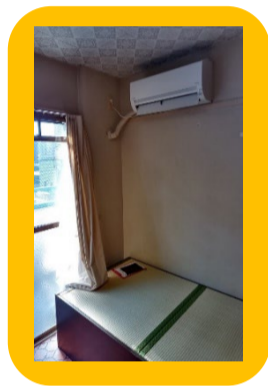
2階/2nd Floor



3階/3rd Floor - 5階/5th Floor



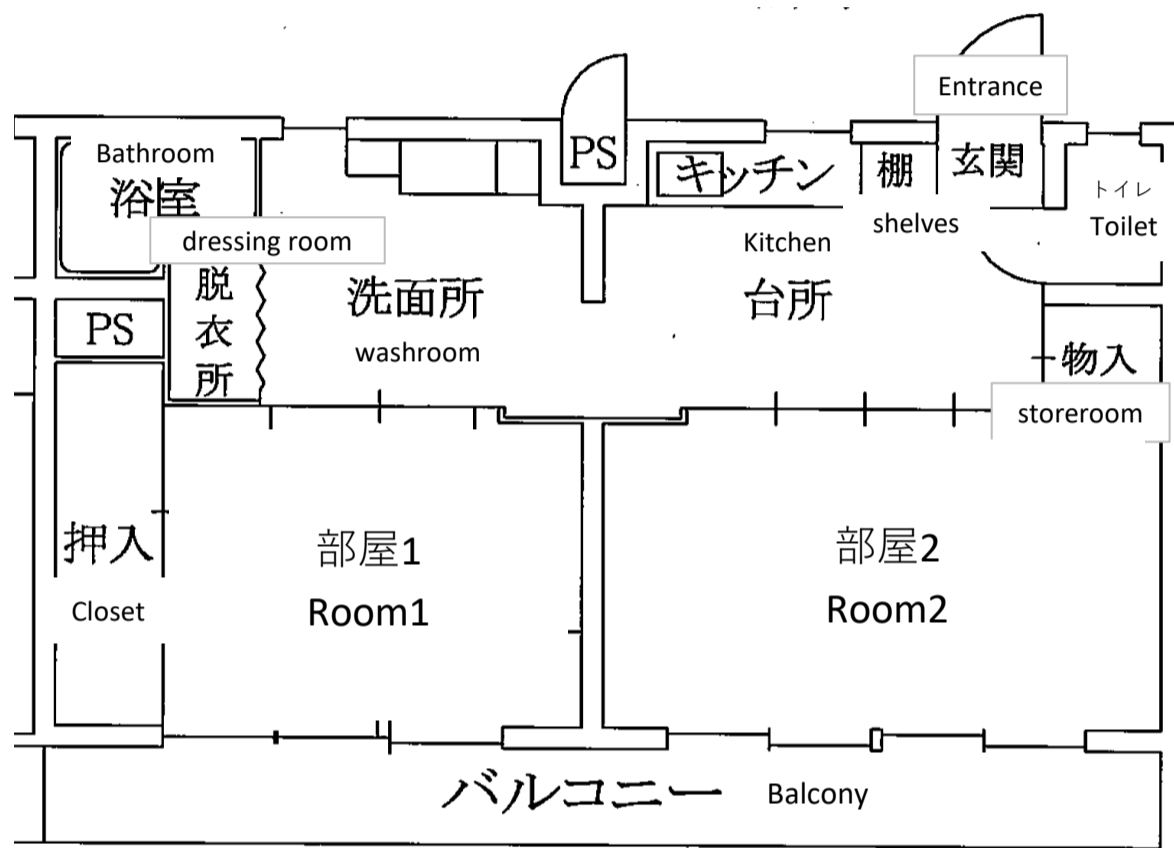
単身(個室)/Single Room (private room)  
 (15号室見取り図/Room No.15)



単身用：1R(約22㎡)  
 シャワー・トイレ・キッチン付  
 [室内備品]  
 エアコン、机、イス、本棚、ベッド、冷蔵庫、等

Single room: 1R (approx. 19.50㎡)  
 With shower room, toilet, and kitchen  
 [Room furnishings]  
 Air conditioner, desk, chair, bookshelf, bed, refrigerator, etc.

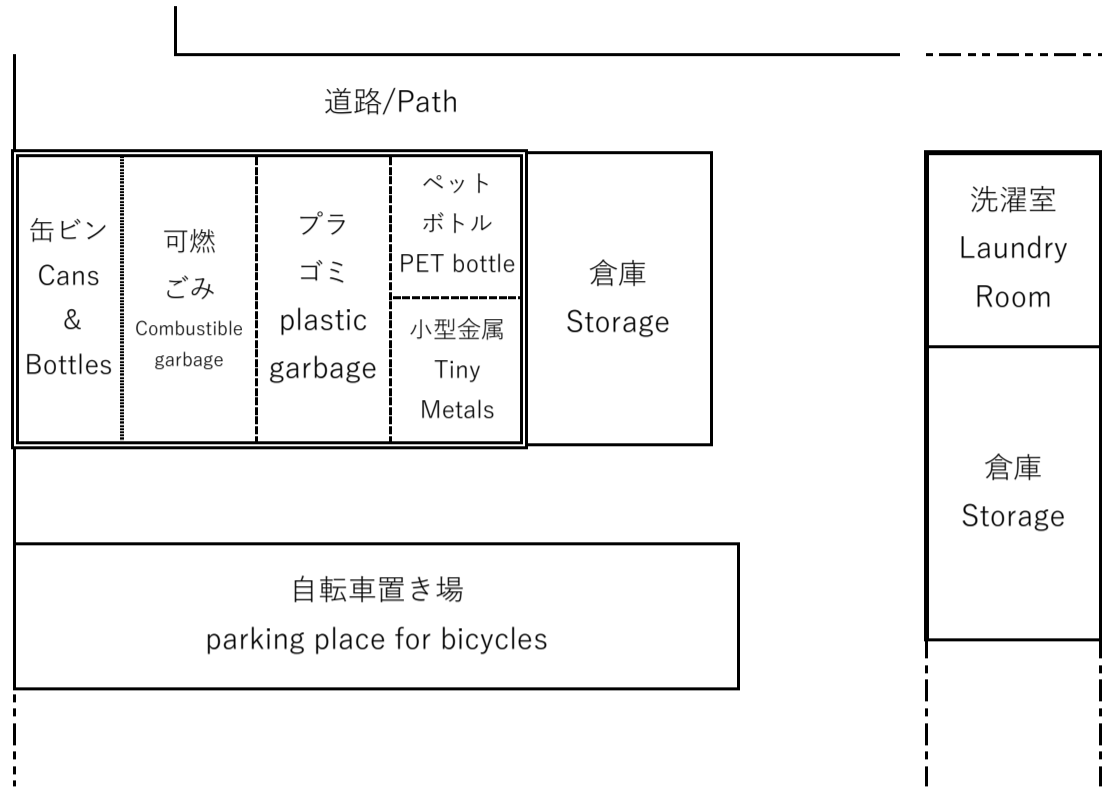
家族部屋/Family Room



家族用：2K(約44㎡)  
バス・トイレ・キッチン付  
[室内備品]  
エアコン、机、イス、本棚、ベッド、TV、冷蔵庫、洗濯機等

Family room: 2K (approx. 39 m<sup>2</sup>)  
With bath, toilet, and kitchen  
[Furnishings in the room]  
Air conditioner, desk, chair, bookshelf, bed,  
refrigerator, washing machine, etc.

# 屋外ゴミ捨て場/Outdoor Trash Bin



# 地図/Map



**堺市北区東上野芝2丁438**  
 \* JR阪和線「上野芝」駅徒歩約7分  
 \* 杉本町⇄上野芝 5駅・約10分  
**鉄筋コンクリート造地上5階（一部3階）**

2-438,Higashiuenoshiba-cho,Kita-ku Sakai City  
 \* About 7 minutes walk from "Uenoshiba" station on JR Hanwa Line  
 \* Sugihonmachi⇄Uenoshiba 5 stations, approx. 10 min.

Reinforced concrete, 5 floors above ground (partially 3 floors)



外観1  
Appearance 1



外観2  
Appearance 2



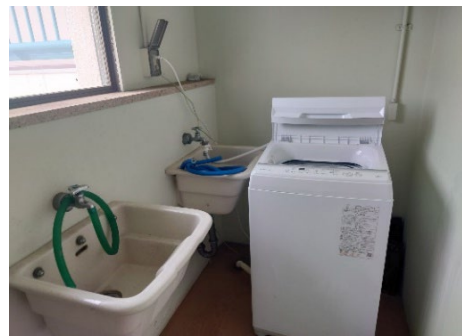
玄関入口  
Entrance



正面玄関  
front entrance



廊下  
Passageway



洗濯室（共用）  
Laundry Room





貸し出し用 掃除機  
Lending vacuumes



A E D