

Osaka Metropolitan University Guest House

<Sugimoto Campus>

- [OMU Guest House](#)
- [Photos of the facility](#)
- [Fees](#)
- [Area map](#)



OMU Guest House



OMU Guest House was established in 1999 as a facility to accommodate visiting researchers for international academic exchange and research activities. All rooms are equipped with furniture, a kitchen and electrical appliances. There is also a laundry room on each floor. The Guest House is conveniently located within walking distance from the JR and subway stations, with environmentally friendly solar panels and solar water heaters installed on the rooftop.



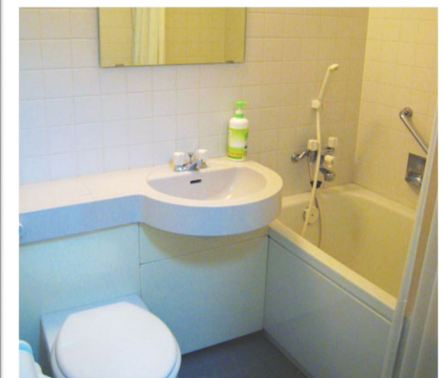
Common space



Single room



Family room



Fees

Rooms	29 rooms	Up to 3 nights	More than 3 nights
F Type (family room)	3 rooms	¥15,000	+ ¥4,000/per night
S Type (single room)	26 rooms	¥7,500	+ ¥2,000/per night

*The above fees include utilities.

*There is an exemption system for exchange students based on an academic exchange agreement with foreign universities.

Room amenities

All rooms are equipped with a kitchen, bathroom and furniture. The internet is free of charge (LAN or Wi-Fi)

< Main amenities >

Air conditioner, TV, refrigerator, vacuum, hot-water pot, toaster, microwave, IH stove, rice cooker, cookware and tableware, alarm clock, hair dryer, bodywash, LAN cable etc.

* Please contact us if you're staying with your family and need an extra bed.

Notes

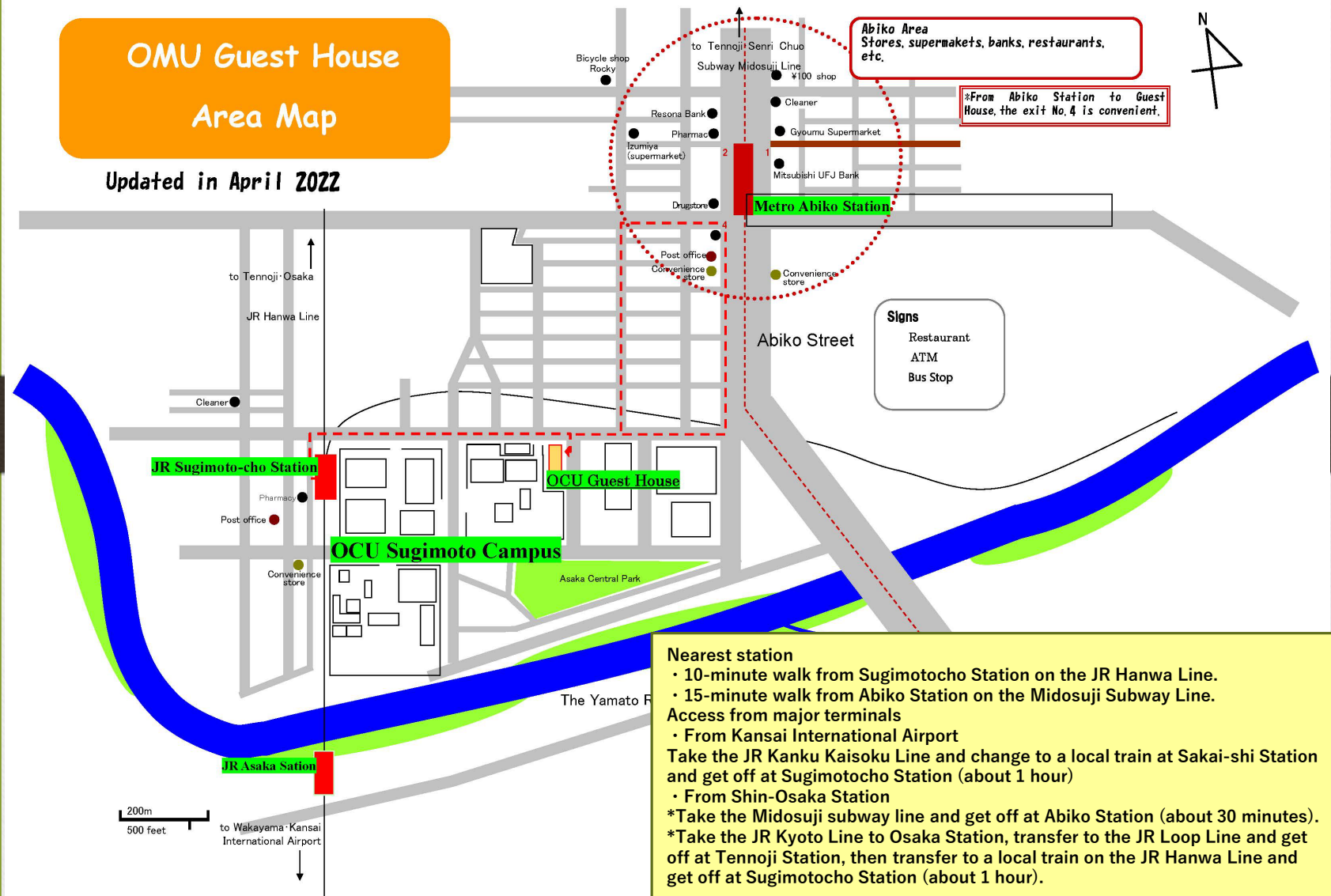
Please bring your own toiletries and detergents (except bodywash). The Guest House staff will give you a towel set when you move in. Please wash it yourself during your stay. Also, check the university website for information and photos of the Guest House. An English version is available.

Common facilities

Washing machine ¥ 100/per use	One in each laundry room on each floor *Please bring your own detergent
Dryer ¥ 100/30minutes	One in each laundry room on each floor
Iron ・ ironing board	One in each laundry room on each floor * Please return to its original place after use.
Microwave	One each in the common room on the 1st floor and in the social rooms on floors 2 to 4

OMU Guest House Area Map

Updated in April 2022



Nearest station

- 10-minute walk from Sugimotocho Station on the JR Hanwa Line.
- 15-minute walk from Abiko Station on the Midosuji Subway Line.

Access from major terminals

- From Kansai International Airport

Take the JR Kanku Kaisoku Line and change to a local train at Sakai-shi Station and get off at Sugimotocho Station (about 1 hour)

- From Shin-Osaka Station

*Take the Midosuji subway line and get off at Abiko Station (about 30 minutes).

*Take the JR Kyoto Line to Osaka Station, transfer to the JR Loop Line and get off at Tennoji Station, then transfer to a local train on the JR Hanwa Line and get off at Sugimotocho Station (about 1 hour).